

Multibay Access (Middle Rolling)

ENG



Double Control Tube
Supplement

Please follow the Multibay Access Instructions for single control tube installation. Double control tubes are only required at the intermediate bay uprights.

When fitting the inner control tubes at each intermediate bay upright, section 2.3 to 2.7, fit an additional control tube as per the appropriate figure below with the centres of tubes 14.5cm apart.

ENG

When fitting the outer control tubes at each intermediate bay upright, section 4.12 and 4.13, fit the additional control tube with the centres of the tubes 14.5cm apart.

When fitting the locking catches in section 5, drill 10mm holes through both outer control tubes and replace the M10x140 bolt with the M10 threaded bar through both tubes fitting the spacer plates in between.

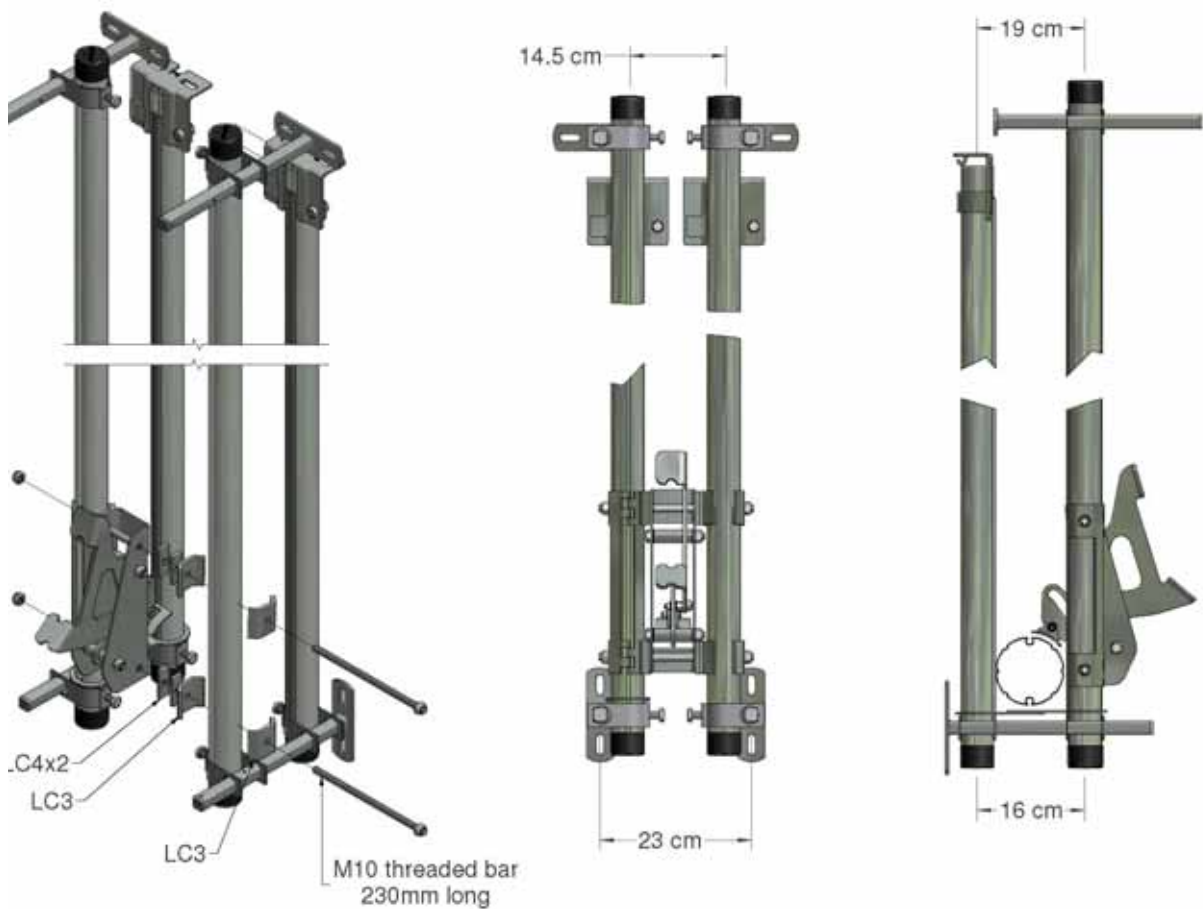


Figure 1, Double Control Tubes Face-Face

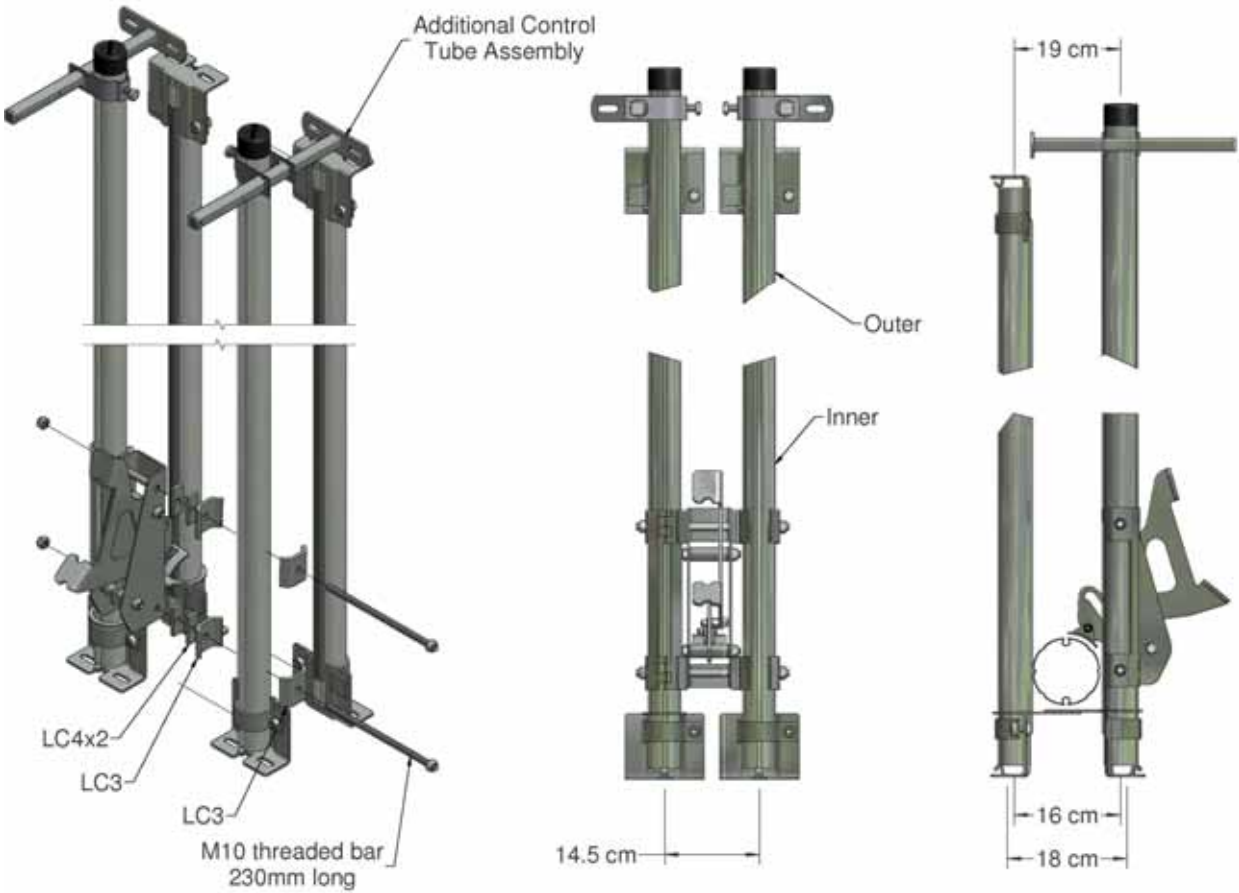


Figure 2, Double Control Tubes Face-End



Manufacturer: GBR Industries Ltd
Galebreaker House
New Mills Industrial Estate
Ledbury
Herefordshire, UK
HR8 2SS

Tel: +44 (0) 1531 637 900
Fax: +44 (0) 1531 637 901

www.galebreaker.com